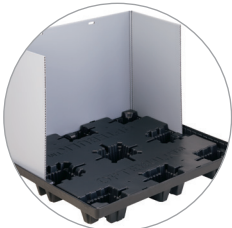


PRODUCT SHEET

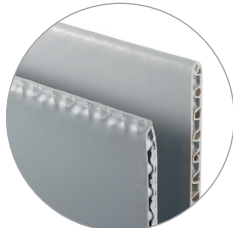
# NEW 28-POSITION OPTEBULK4845-35

The OpteBulk container is a sustainable alternative to paper gaylords for storage and distribution of raw material, assemblies and finished goods while offering transportation, packaging, and warehouse cost savings as a reusable collapsible container.

- Container includes reusable plastic pallet, sleeve and topcap
- Industry first 28 total container positions per 53' trailer
- Sleeve is manufactured from a tri-laminated structured core material with bi-directional strength
- Additional heights available to maximize outbound transportation – 27" and 52"
- One-person container assembly and collapse
- Clamshell collapse kits all components together for reverse logistics
- Access doors and 2-piece split-sleeves available for manual loading



Split-sleeve long side opening



Rounded vs. sharp-crippled top edge seal



Active sleeve locks in both pallet and topcap

## PRODUCT DIMENSIONS

OPTEBULK 4845-35	Outside Dimensions (in)			Inside Dimensions (in)			Weight (lbs)	Internal Volume (cu. ft)	Access Door Openings				Truckload Quantity 53' Trailer			
									Height (in)		Width (in)		System		Individual	
	L	W	H	L	W	H			Long Side	Short Side	Long Side	Short Side	Assembled	Collapsed	Pallet / Topcap	Sleeve Only
	48.8	44.5	35.0	46.0	41.8	27.1			64.0	30.2	13.0	-	33.5	-	84	308

48" SIDE



45" SIDE

